

# GRADE EIGHT (CONTINUED)

From memory, to be played staccato, tongued or with legato tongue

All to be played ♩ = 120

Chromatic starting on any note, E-Bb



*etc.*

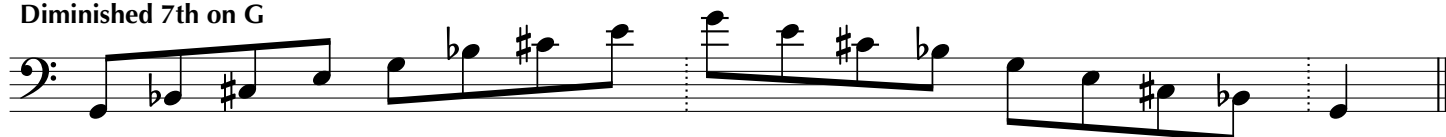
Whole-Tone Scale on A



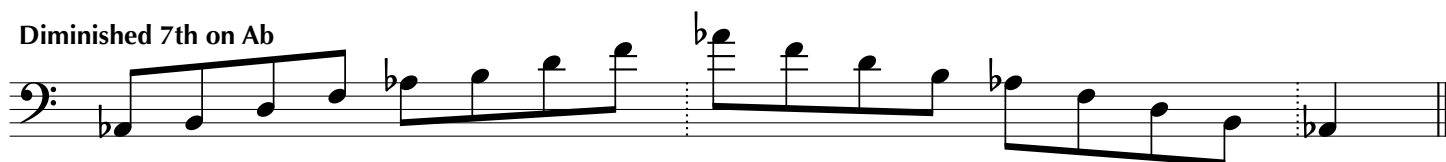
Whole-Tone Scale on Bb



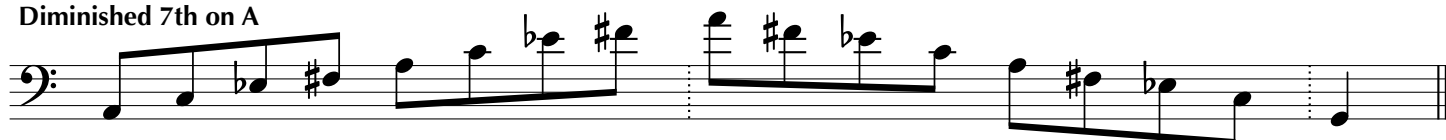
Diminished 7th on G



Diminished 7th on Ab



Diminished 7th on A



## Dominant 7th in A



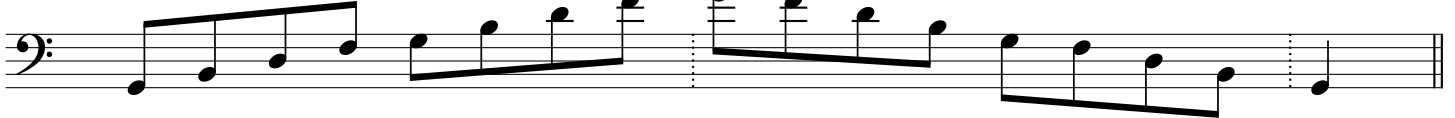
## Dominant 7th in Bb



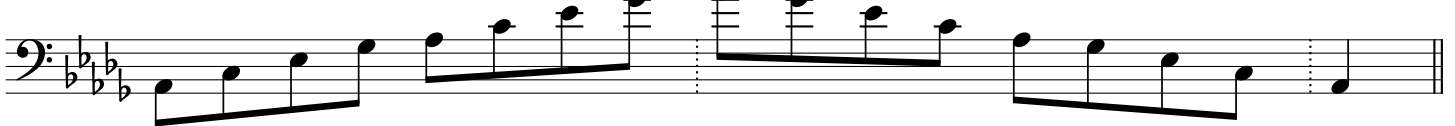
## Dominant 7th in B



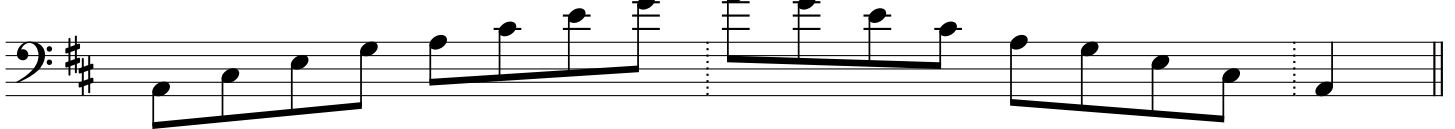
## Dominant 7th in C



## Dominant 7th in Db



## Dominant 7th in D



## Dominant 7th in Eb



Full major and minor scale and arpeggio requirements are available separately